

the ANCHOR AGE



Incorporated 1878

Phone: 502/245-4654

Fax: 502/245-5651

The Honorable W. Thomas Hewitt
Mayor of Anchorage



April 2010

GRAND OPENINGS SCHEDULED FOR TWO NEW RESTAURANTS

THE ANCHORAGE CAFÉ

The Anchorage Café plans to open during the week of April 26th. Bruce Lake has been fine-tuning recipes in a test kitchen while waiting for the building to be completed. In addition to indoor and outdoor seating for those wishing to eat-in, he will offer



“grab & go” sandwiches, salads, and box lunches to those who prefer to order takeout. The take-out window will also feature hand-dipped, “super premium” ice cream and gelato.

Hours of operation will be Monday – Saturday 7 a.m. to 8 p.m. and Sunday 8 a.m. to 6 p.m. Wi-fi will be offered to customers, and Lake plans to make the lower level available for private events. Also coming soon is the café’s website www.theanchoragecafe.com.



Food service will include fresh fruit parfaits, hot and cold cereals, egg sandwiches, breakfast casseroles, and a variety of pastries and baked good in the morning followed by soups, salads, and hot and cold sandwiches for lunch. The menu will feature the best meats (cooked in house), produce, baked goods, and fruits available, sourced locally whenever feasible. On the beverage side, Lake has partnered with one of the top coffee roasters in the country to ensure that the coffee and espresso drinks are consistently of the highest quality. The baristas will craft a wide array of espresso based drinks, in addition to coffee, tea, and chai. Frozen drinks will include fresh fruit smoothies, shakes, and espresso based frappes.

Lake hopes that a menu featuring fresh, carefully crafted food, dinks, and desserts, presented by a welcoming staff in a striking location, will make The Anchorage Café a destination for Anchorage residents of all ages.

VILLAGE ANCHOR PUB & ROOST and THE SEA HAG Bar

Imagine a Moulin Rouge-inspired French bistro roosting atop an English Pub nestled in the charming village of Anchorage, and you will instantly feel resident Kevin Grangier’s inspiration behind the Village Anchor Pub & Roost. Grangier’s concept accommodates the unique appetites of two sets within the Anchorage community – those looking for a convivial experience in an upbeat, spirited environment; and those who want a more relaxed unassuming setting, content to linger over a cup of coffee or a glass of wine after a hearty meal.



The “Anchor” restaurant and bar, and its lower-level sister bar, The Sea Hag, inspire a mental European vacation with a touch of contemporary. Their immense fireplaces, rich dark woods, red leather, worn velvets, brick, copper and wrought iron make for an upscale yet relaxed space.

Great food, variety of drink and notable service will be the foundation of The Village Anchor. Anchorage residents will be able to enjoy a comfortable bistro menu, prepared by a Culinary Institute of America-trained chef, in an affordable price range. Fresh pastas, breads and desserts made on-site every night will complement the creative selections. Grangier stated that the bars will feature an impressive roster of beers, bourbons, and wines, each defined to appeal to a unique palate and interest.

Following a gradual opening schedule that begins with The Sea Hag in late April, The Village Anchor Pub and Roost will serve guests Sunday – Thursday 11:30 a.m. to 11:00 p.m., and Friday and Saturday from 11:30 a.m. to 1:00 a.m. A brunch is planned for early summer, beginning at 10 a.m. on both Saturday and Sundays.

IMPORTANT INSERTS IN THIS EDITION

The City of Anchorage is required to publish all ordinances that have been passed by City Council. These ordinances can be published in *The Courier-Journal*, the City's *Anchor Age* newsletter (as are these) or by individual mailings. Though many ordinances may not directly affect everyone in the community, this information is made available to all homeowners of the City.



ELECTION DAY

The right to vote is our most precious freedom. The 2010 Kentucky primary elections will be held on May 18th.

If you are currently not registered to vote, if you moved since the last election, or you will be out of town on Election Day, time is running short to file changes with the Board of Elections. Voter registration deadline is April 19th for the primary.

If you moved, make sure you change your address with the Election Center so you can vote in your correct polling location. Voters who will be outside the county on Election Day may vote in person at the Election Center, 810 Barret Avenue, Room 103, at least 30 days before the election. Kentucky law allows mailing an absentee ballot under special circumstances; contact the Election Center at 502-574-6100 or visit the Jefferson County Clerk website www.jeffersoncountyclerk.org to see if you qualify. The deadline to return the official "Application for Absentee Ballot" is seven (7) days before an election.

CULVERTS AND DRAINAGE

Spring is a good time to remind residents about the importance of keeping their drainage channels clear. City of Anchorage Ordinance §52.11 states that: "It shall be the responsibility of the owner of the real estate where natural drainage channels, or man made drainage channels are located, to maintain the channels free of any form of obstruction which impedes water flow." Also, the ordinance says: "It shall be unlawful for any person in the city to deposit leaves, grass clippings, or any other form of debris, or obstruction, in any natural or man made drainage channel."



Property owners are also responsible to keep driveway culverts open and free flowing. Please clean out culverts clogged with leaves and silt, and/or replace collapsed and non-functioning culverts.



U.S. CENSUS

Every household should have received their 10 question census form in the mail during March. If you have not completed and returned it, please do so as soon as possible. The census is more than just a population count. The amount of federal funds distributed each year to states is based in part on census population data. Congressional redistricting also relies of updated census information.



SPRING CHECK-UP

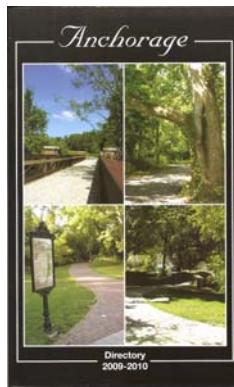
At last! The temperatures are creeping up and we can get outdoors to check the yard and house for maintenance or fix-up issues. Stop across the street or far enough down the road to get a good view of the house and its surroundings. Walk towards the house, looking around

as if it were your first visit. Be observant – take a stroll around the structures and check out the yard too. Make a list of the problem areas you discover. Tackle clean-up and repair chores first, then put some time into the other projects.

- Kill mold and mildew on the house, sidewalks, roof or driveway.
- Clean windows and gutters.
- Pressure wash dirty siding and dingy decks.
- Stow away unnecessary garden implements and tools.
- Trim tree limbs that are near or touching the home's roof.
- Repair or replace broken gates and fencing.
- Fresh paint can do wonders for dingy doors and trim.

If you brainstorm, you'll find solutions to most problems. Find the areas where improvements are needed, then work on them as best you can.

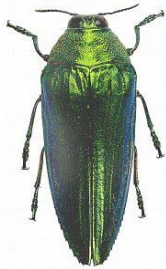
ANCHORAGE TELEPHONE DIRECTORIES



Civic Club Members receive two copies of the Directory with their annual paid membership. If you have paid your dues, but have not picked up your 2009-2010 Anchorage Directories at City Hall, please do so as soon as possible.

If you are not a Civic Club Member please consider joining. For your \$25 fee you'll not only receive your phone books, but you get to enjoy all of the fun events the Civic Club organizes for our community throughout the year. To become a member of the Civic Club simply stop by City Hall to sign up.

Additional copies of the directory are available to Civic Club Members for \$5.00 each. Non-Members may purchase directories for \$15.00 each.



THEY'RE HERE! ASIAN INVADERS THREATEN ASH TREES

First discovered in southeastern Michigan in 2002, the very destructive Emerald Ash Borer attacks all species of ash trees. The inset pest has now spread to over 13 states and two Canadian provinces.

The emerald ash borer adults are ½" long metallic green insects with purplish abdominal segments. Although the adult stage of this insect does little feeding damage, it is the very destructive larval stage of this insect, which looks like a creamy white tapeworm about 1¼" in length, that kills the trees. The larvae tunnel under the bark of ash trees and severely damage the vascular system of trees, disrupting the normal uptake of water and nutrients within them. When they exit the tree in spring, they leave behind "D-shaped" exit holes about 1/8" wide in the bark. Early symptoms include the decline and dieback of the upper portions of the tree's canopy proceeding then to the entire tree. Emerald ash borers can kill otherwise healthy ash trees within a few short years. This insect has destroyed tens of millions of ash trees in other states.

The emerald ash borer was first detected in Kentucky in 2009. Perhaps you saw the purple traps hanging in some of the ash trees in your neighborhood last summer that were hung to detect exactly where the insects are in KY. Eighteen Kentucky counties now have quarantines in place for the emerald ash borer, including Jefferson, Oldham, Shelby, and Trimble in the Louisville area. The traps will be put up again soon this spring. Neighboring states also have quarantines in place.

What does a quarantine mean to you? It means it is against the law to transport the emerald ash borer, ash nursery stock (trees), ash as well as all types of hardwood firewood, green ash lumber, and any other materials that present a threat of artificially spreading this insect from a quarantined area into a non-quarantined area. To be perfectly clear, do not move hardwood firewood or logs out of a quarantined area! There are stiff penalties and fines associated with those who break the law.

The general public can expect ash trees to begin declining very quickly here once this insect's populations reach peak levels. There are some chemical controls available to help prolong the life of your ash trees, but it is highly recommended to begin removing your ash trees over the next few years and replacing them with other species of trees. A list of ash tree replacements for our area would include maples, oaks, lindens, bald cypresses, river birches, black gums, beeches, etc.

For more information for how to handle the ash borer problem, please contact a certified arborist or visit the emerald ash borer site www.emeraldashborerinfo.com. For a list of certified arborists in Kentucky, you can visit the website of the International Society of Arboriculture at www.isa-arbor.com.

SPRING TREE PROGRAM

Residents are reminded to continue watering their newly planted trees. The young saplings require a constant water source during their first year until they become fully established.



SPRING YARD SALE

The Anchorage City-Wide Yard Sale 2-day event is scheduled for Friday and Saturday, May 14 and 15th. Anyone wishing to participate one or both days should call City Hall at 245-4654 to sign-up. City maps with a list of participants will be available at the fire house for shoppers. An ad will be placed in the *Courier-Journal*. A donation of at least \$5 will be appreciated to help cover costs. Any questions, please call City Hall or email Diane McAllister at dmcalli404@aol.com



RAIN GARDENS

You can now download a copy of the **Second Edition of A How-To Guide for Building Your Own Rain Garden** from MSD's website, www.msdlouky.org, or you can pick one up in the MSD lobby at 700 West Liberty Street. Or contact MSD's Customer Relations at (502) 587-0603 to have a copy mailed to you. The 2nd edition includes an expanded plant list, plus more information about understanding urban stormwater and the role rain gardens play with infiltrating runoff.

RAIN BARREL SOURCES

Rain barrels collect, store, and divert runoff during a rain event. They are good for the environment and help save money on your water bill. Rain barrels are available for sale at the Louisville Nature Center (LNC) located at 3745 Illinois Avenue, across from the Zoo. The cost of one 58 gallon barrel is \$70, or for 2 or more barrels, \$65 each. Call 458-1328 to purchase, reserve and arrange for pick up.

ATTENTION SHUTTER BUGS



Spring is beautiful in Anchorage! And so are summer, fall and winter. Submit your photos of Anchorage's "natural wonders" to the Anchorage Forestry Board so they can be considered for the 2011 annual calendar. You can send your photographs by email attachment to Sandy Kunzler at anchorage.sandy@insightbb.com or bring in a CD/DVD, or an actual photograph to City Hall.